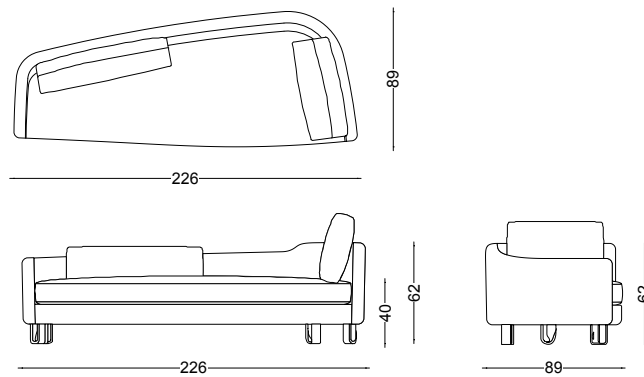


AMBASSADOR CHAISELONGUE





AMBASSADOR CHAISELONGUE

Couched in the tradition of the finest craftsmanship, the Ambassador chaiselongue by Gisbert Pöppler, is a study in luxe understatement with a twist. The lines of the couch do not follow a strict geometry, offering a surprising alternative to conventional seating with a subtly flowing shape where every detail is lightly tweaked. Each intricate aspect of the sculptural form has been painstakingly considered. One can both see and feel the attention to detail: From the sculpted legs, each hand forged and twisted in itself and the zipperless down cushions to the spring framing – a cherished piece in the living room!

DIMENSIONS: cm D 89 x W 226 x H 62 x SH 40 | inch D 35" x W 88.9" x H 24.4" x SH 15.8"

MATERIAL: Coil springs upholstered with padding and down, forged steel feet

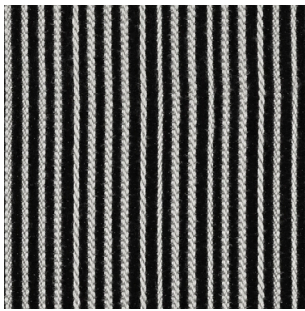
FABRIC REQUIRED: mtl. 18,50 (W 128 cm) | lin. in. 728.3" (W 50.4")

PRICE: COM 27.100 € excl. VAT (pictured fabric: Milleraiis, Scott and Chenille de Tours by Le Manach - 32.600 € excl. VAT)

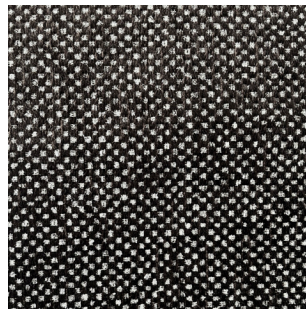
LEADTIME: 14 weeks

AMBASSADOR CHAISERLONGUE

POLSTER SUGGESTION



Millerais, Le Manach



Scott, Le Manach



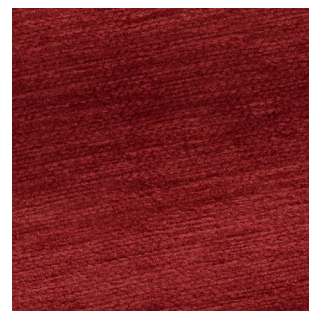
Chenelle, Le Manach



Millerais, Le Manach



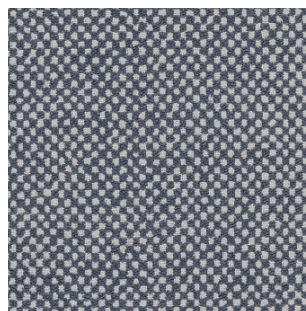
Scott, Le Manach



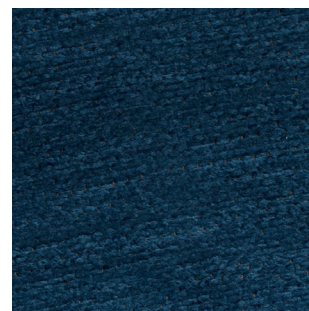
Chenelle, Le Manach



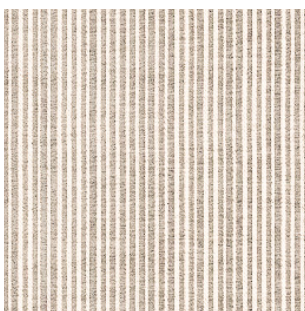
Millerais, Le Manach



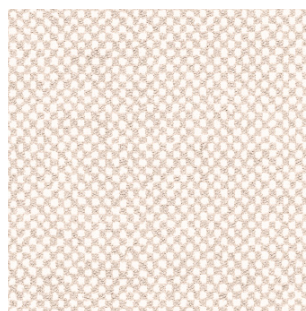
Scott, Le Manach



Chenelle, Le Manach



Millerais, Le Manach



Scott, Le Manach



Chenelle, Le Manach

GISBERT PÖPLER OBJECTS 2025

