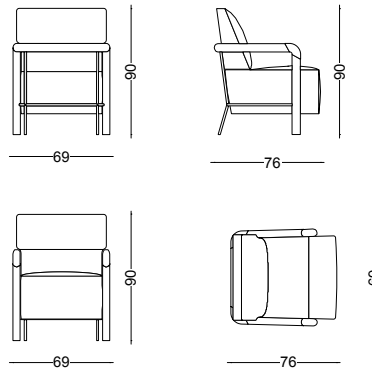


COUNCIL CHAIR





COUNCIL ARMCHAIR

This handsome seat, the Council armchair by Gisbert Pöppler, owes its origin to chairs once used in cold war diplomatic conference between leading officials. Appearing stately and affording comfort this chair is made to ensure the evening won't stop because the company needs to stretch their legs. The walnut armrests which continue around the upholstered body, embracing its back are complimented with a steel frame and legs of refined proportions and together hold up this noble seat.

DIMENSION: cm D 76 x W 69 x H 90 x SH 45 x AH 66 | Inch D 29.7" x W 27.2" x H 35.4" x SH 17.7" x AH 26"

MATERIAL: Walnut armrests, upholstered body & steel frame legs

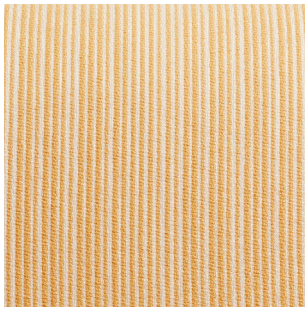
FABRIC REQUIRED: mtl. 4,00 (W 128 cm) | lin. in. 157.8" (W 50.4")

PRICE: COM 10.700 € excl. VAT (pictured fabric: Millerais by Le Manach, -11.95 0 € excl. VAT)

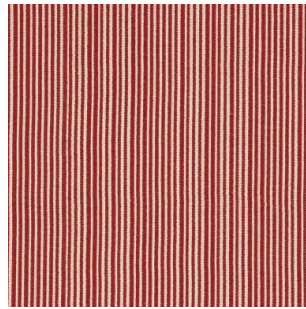
LEADTIME: 12 weeks

COUNCIL CHAIR

FABRIC SUGGESTION



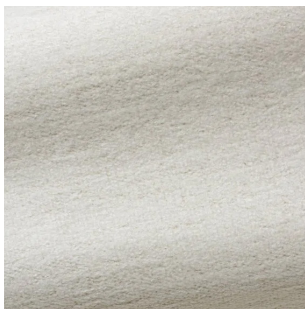
Millerais, Le Manach



Millerais, Le Manach



Millerais, Le Manach



Candice Nacre, Pierre Frey



Candice Coquillage, Pierre Frey



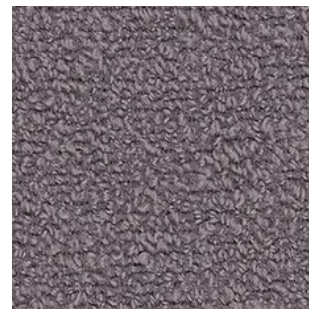
Candice Perle, Pierre Frey



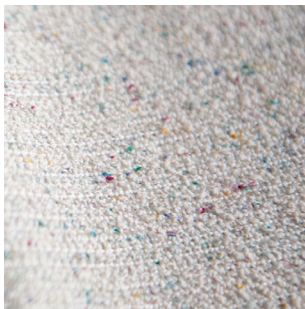
Seafoam 8461, Bute



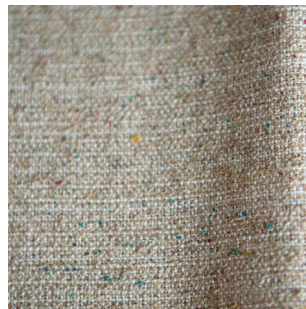
Honeybee 9970, Bute



Haar 5620, Bute



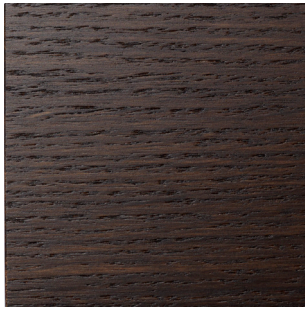
Tomi 163A, Rruka



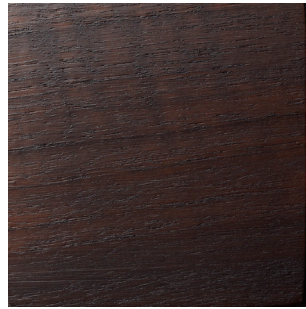
Tomi 163B, Rruka

COUNCIL CHAIR

ARMREST & FEET



Auburn oak



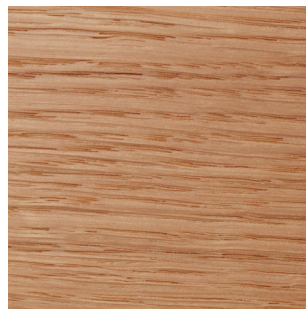
Black walnut, glossy



Black walnut



Caramel teak



Blonde oak



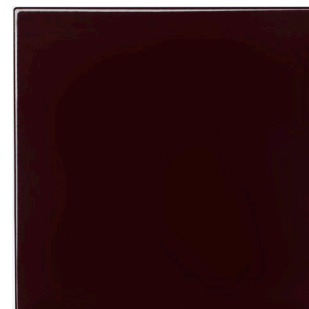
White ash



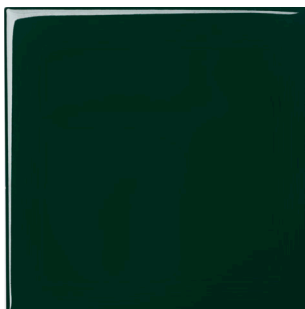
Zinnia gold, high glossy



Imperial red, high glossy



Tyrian purple, high glossy



British racing, high glossy



Petroleum, high glossy



Creme white, high glossy

GISBERT PÖPLER OBJECTS 2025

