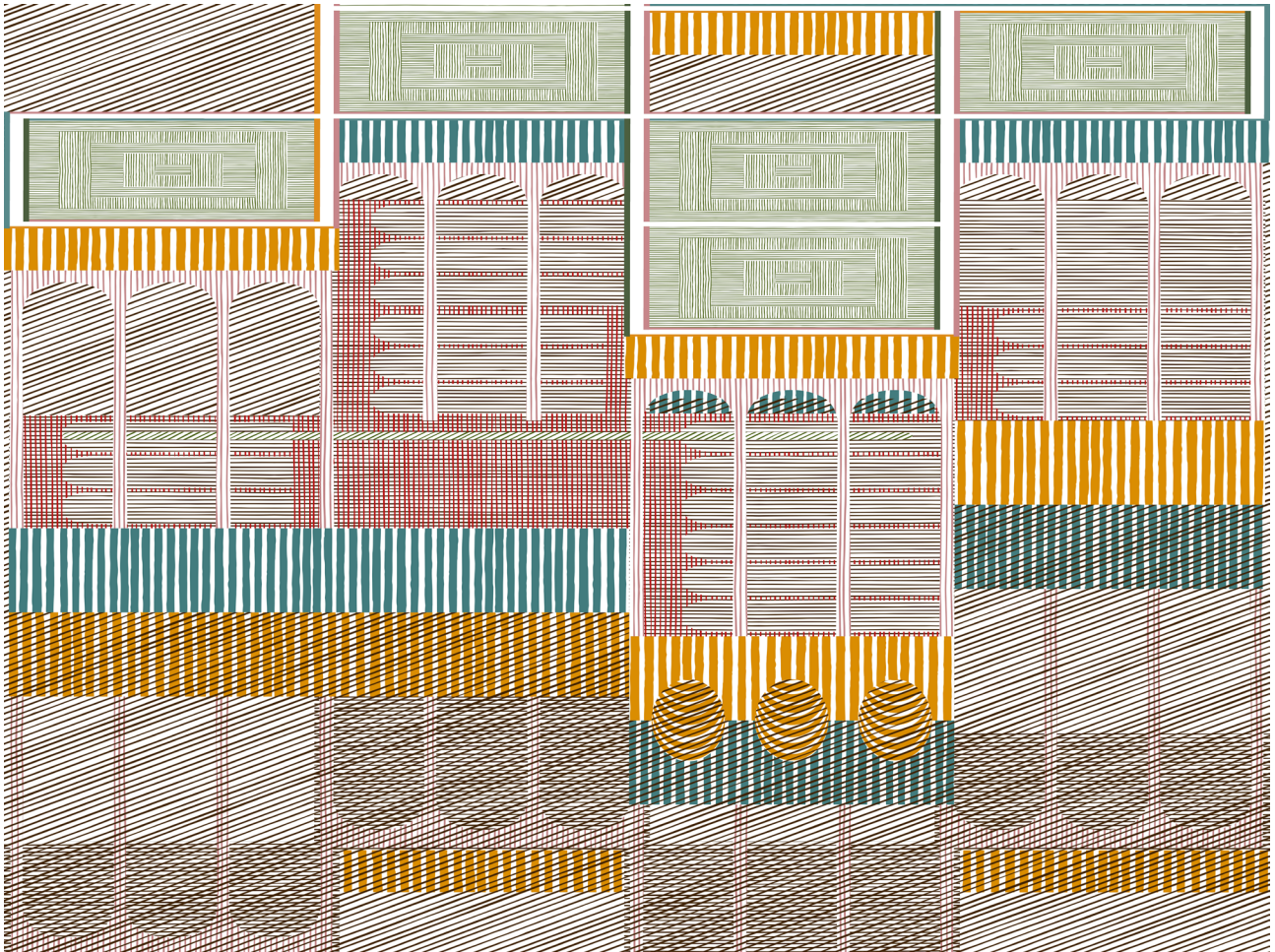
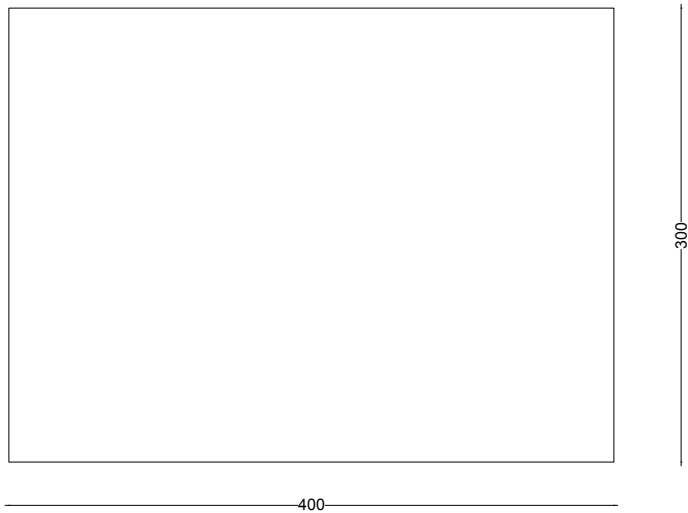


THE PAVILION RUG





THE PAVILION RUG

Inspired by Philip Johnson's personal folly in his Glass House pond, the rug, Pavilion is a play of patterns creating a caricature of the little pavilion, its shadows and reflection in the tiny pond. Blending design, quality and craftsmanship, this rug is, as Edward Fields would have said, art for the floor, hand tufted from the finest wool.

DIMENSION: cm W 400 x D 300 cm | inch W 13'1" x D 9'10" (other sizes available on request)

MATERIAL: Hand tufted wool

PRICE: 29.200 € excl. VAT

LEADTIME: 16 weeks

